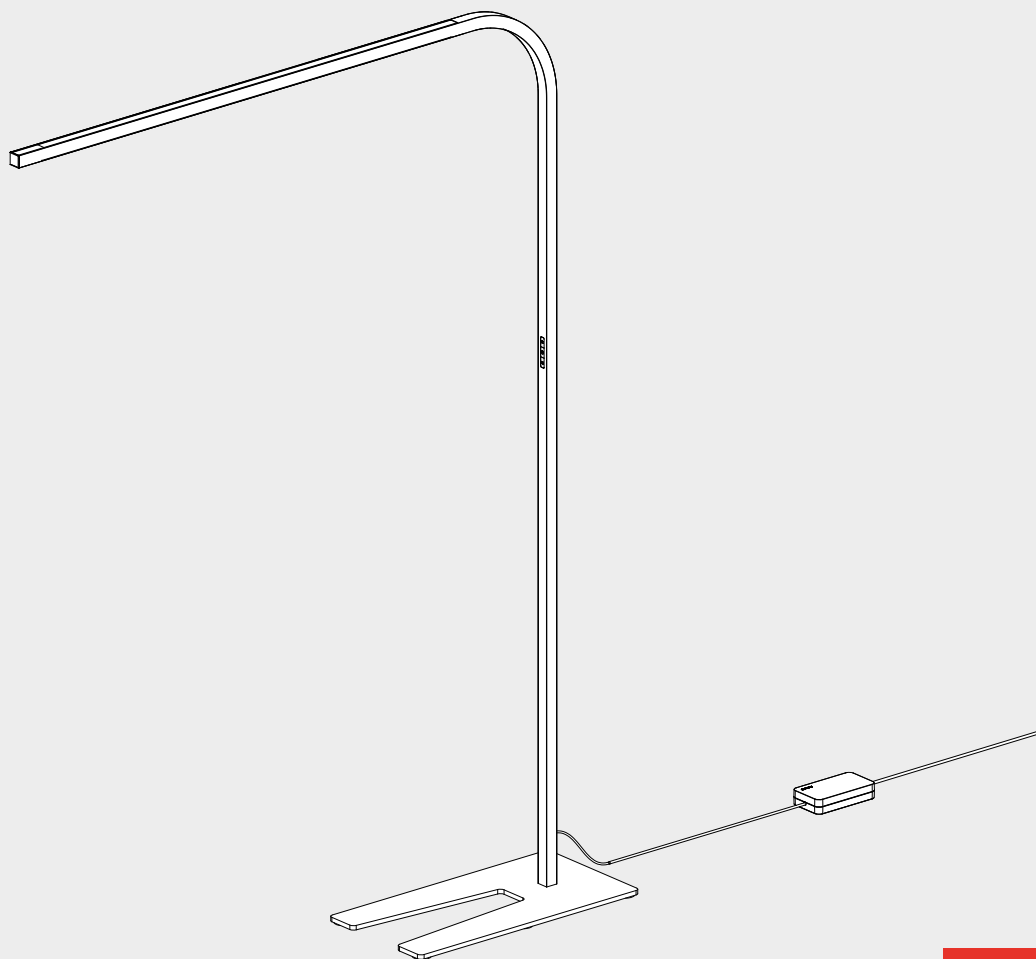


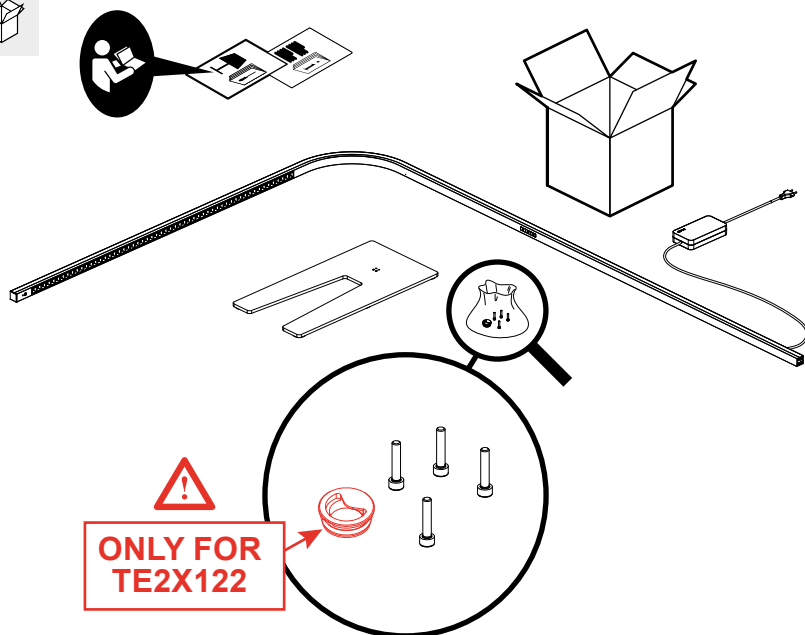
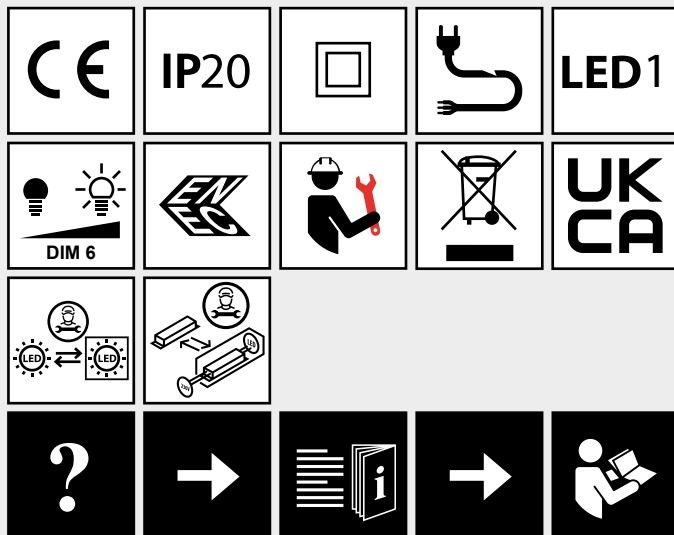
## TURN AROUND

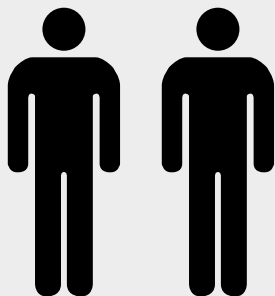
design  
Carlotta de Bevilacqua



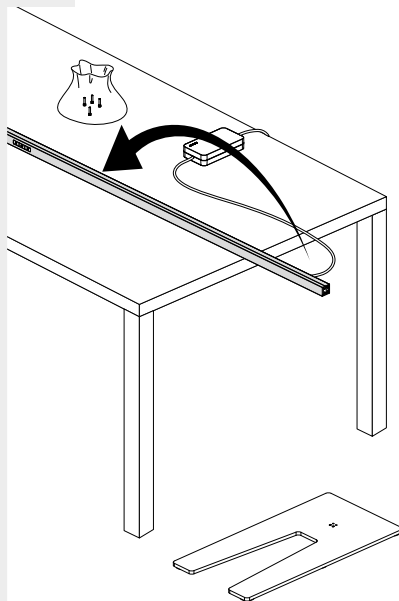


i

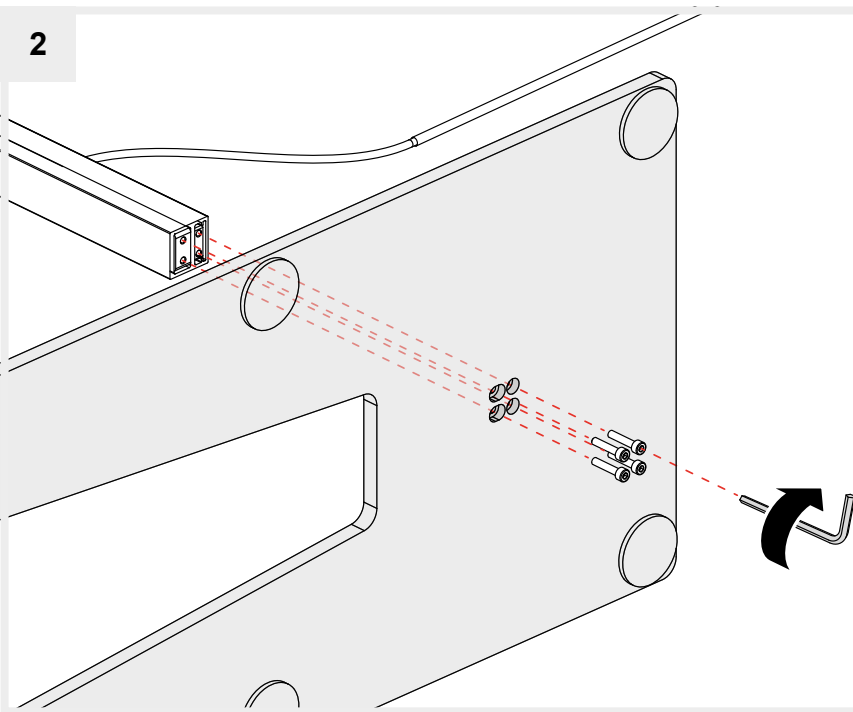


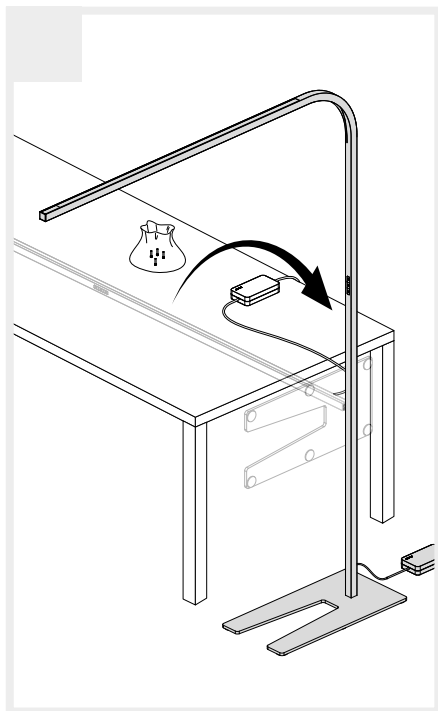
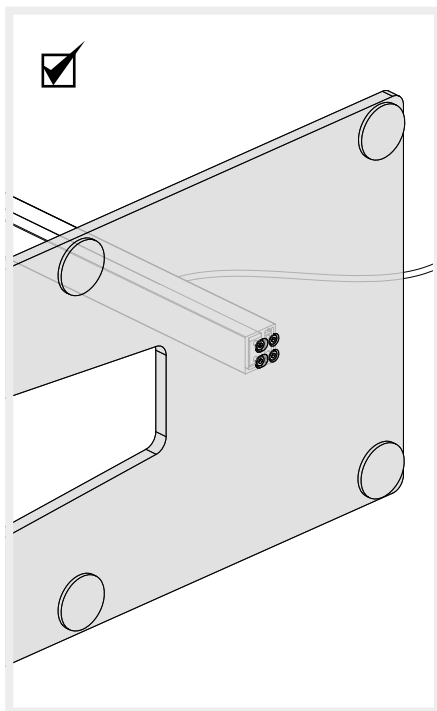


1



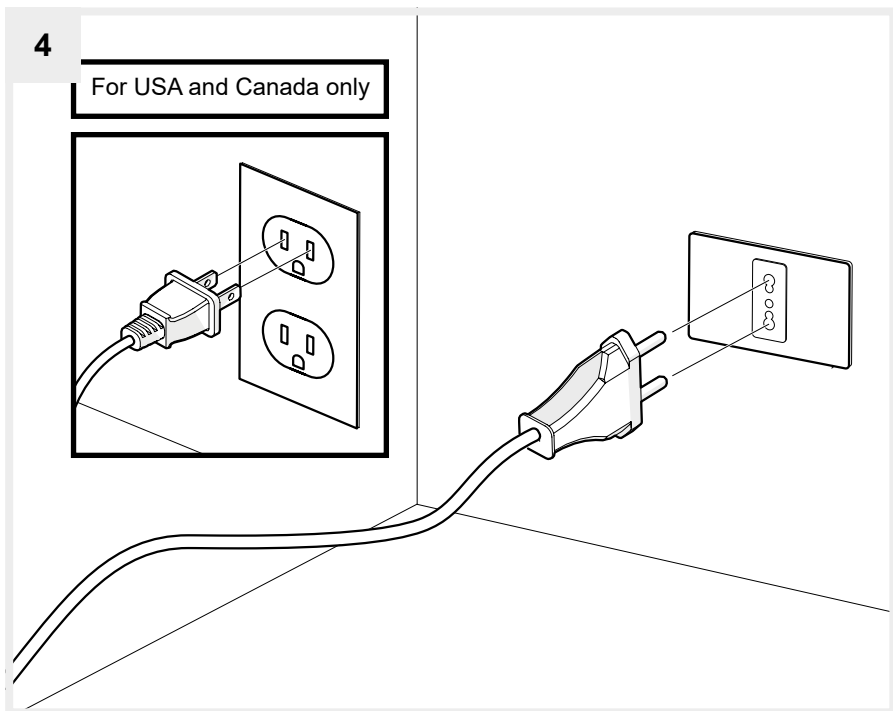
2





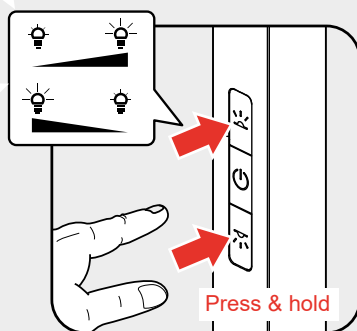
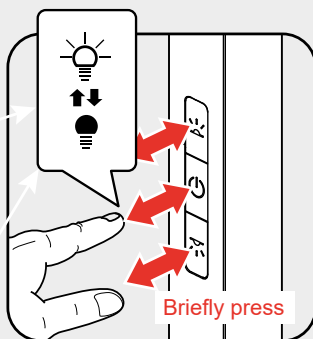
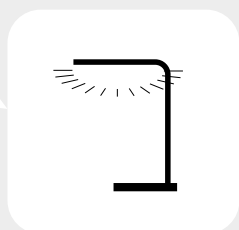
4

For USA and Canada only



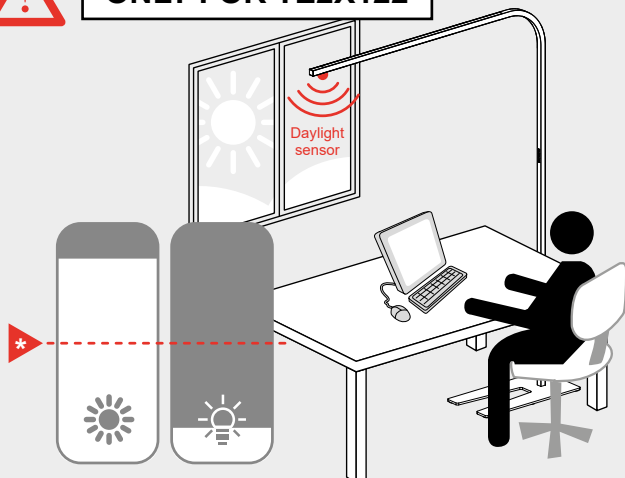


**ON / OFF**

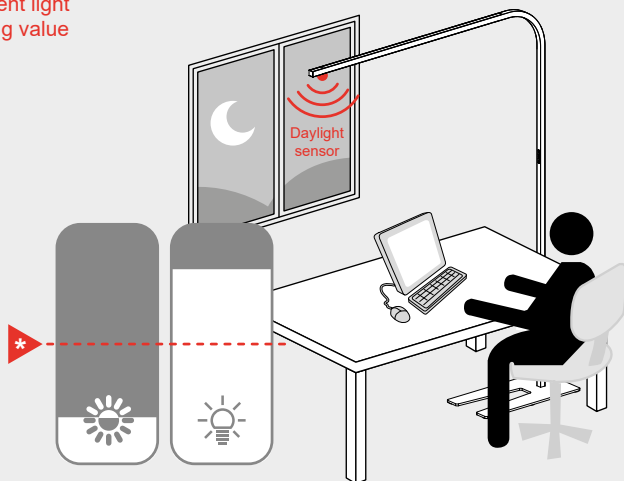




ONLY FOR TE2X122



\* ambient light  
setting value



\* ambient light  
setting value

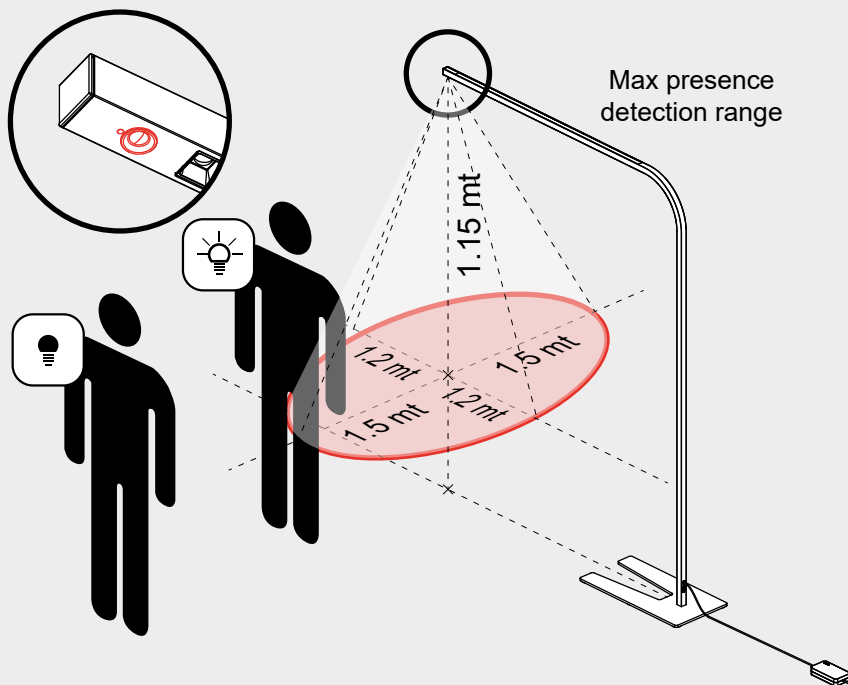
The luminaire is equipped with a daylight sensor and PIR sensor. The luminaire comes with a pre-set **ambient light setting** in memory.

At power on, direct and indirect lights switch on:

- if ambient light is higher than the preset value, luminaire's light emission slowly decreases,
- if ambient light is lower than the preset value, luminaire's light emission slowly increases.



ONLY FOR TE2X122



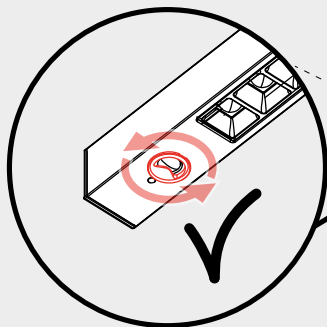
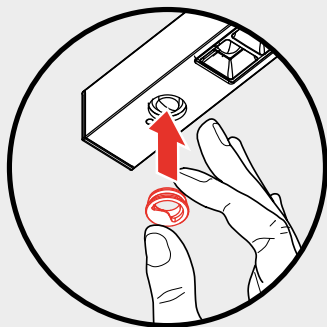
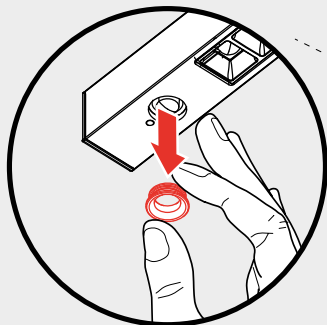
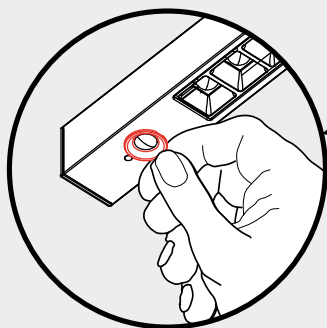
If the user leaves the lamp on and walks away, after 10 minutes, light emission lowers to 30%; then after a further 3 minutes, the lamp switches off.

When PIR sensor detects a presence, the lamp switches on at the preset value.

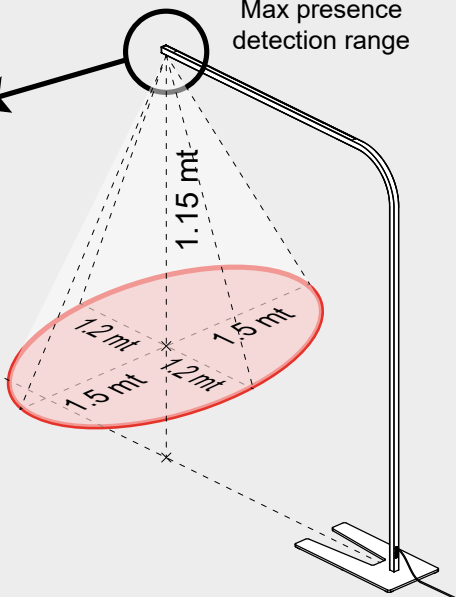


ONLY FOR TE2X122

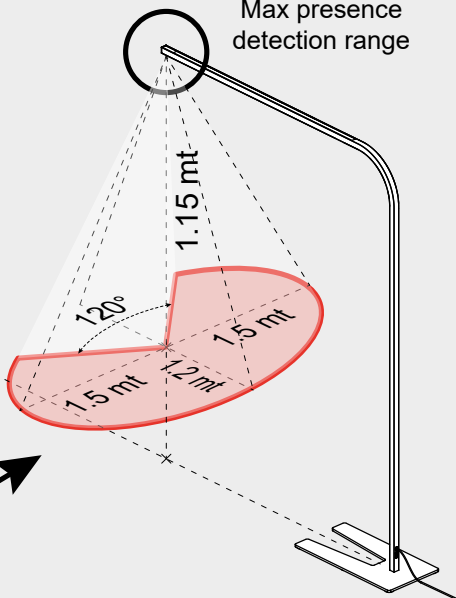
+



Max presence  
detection range



Max presence  
detection range







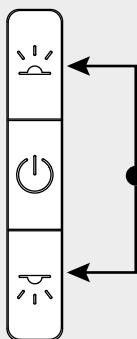
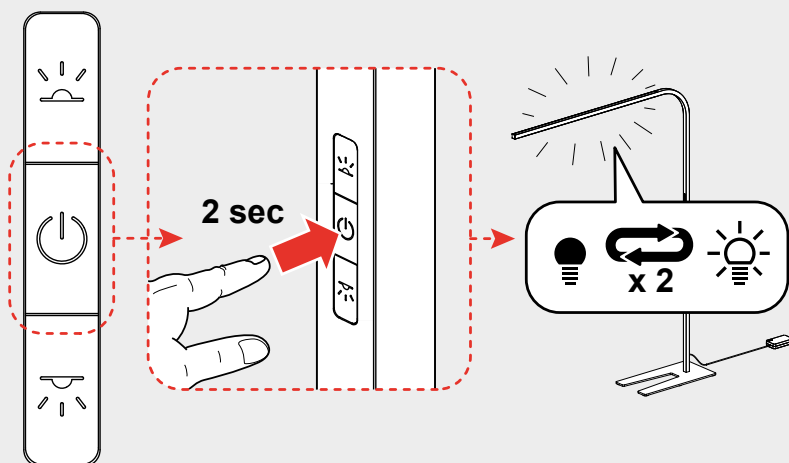
ONLY FOR TE2X122



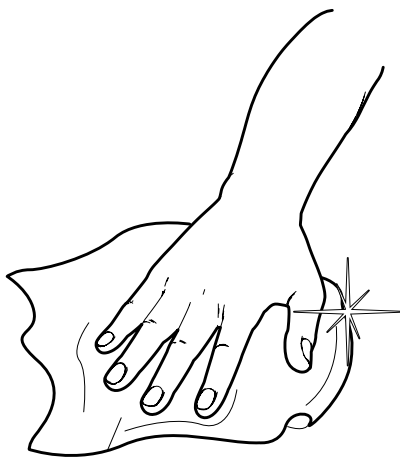
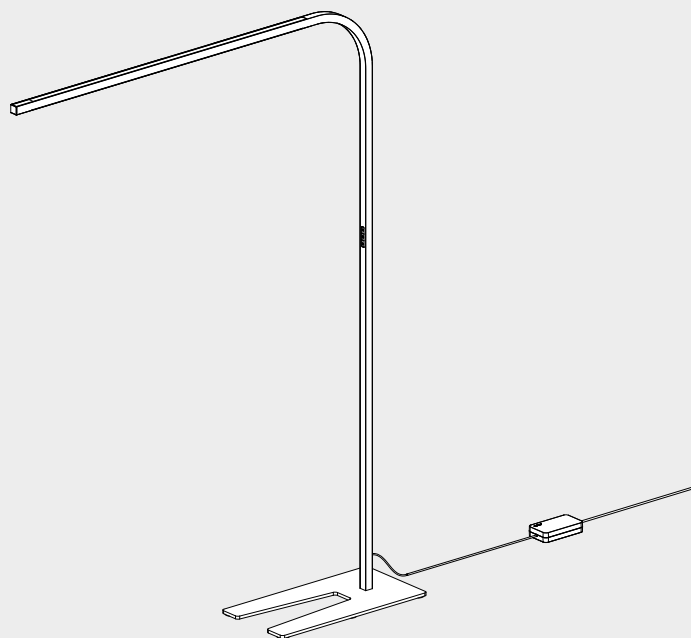
**To change the pre-set ambient light value**, the user must:

- set the desired light value by dimming (press & hold, **see fig.5**) the direct and/or indirect emission of the lamp,
- when the desired value is reached, hold on the central switch for 2 second; the lamp will flash 2 times.

This meaning the lamp has saved the new ambient light value and from now on it will work as described so far.

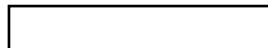


If the user changes light emission's intensity manually operating on the switches (without changing the set value - as shown here above), daylight sensor and related automatic features are disabled, only PIR sensor keeps working.





# Artemide®



## **Artemide**

via Bergamo, 18  
20006 Pregnana M.se (MI)  
ITALIA

tel. +39 02 935 181  
fax +39 02 935 90 254  
fax +39 02 935 90 496

[www.artemide.com](http://www.artemide.com)

VAT IT00846890150

## **Artemide Inc.**

250 Karin Lane  
Hicksville, NY 11801

tel. 631 694 9292  
Toll Free 1-877-Art-9111  
Fax 631 694 9275

[www.artemide.net](http://www.artemide.net)

## **Artemide Ltée/Ltd.**

11105 rue Renaude Lapointe  
Montréal, Québec H1J 2T4

Tel. 514 323 6537  
Toll Free 888 777 2783  
Fax 514 323 8864

[www.artemide.net](http://www.artemide.net)

cod. Y513002016B